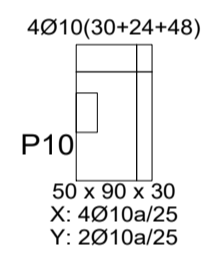
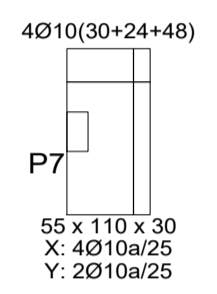
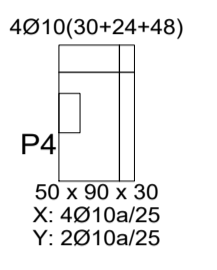
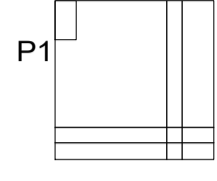
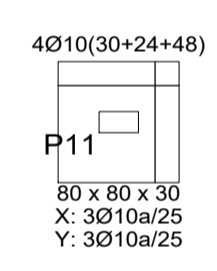
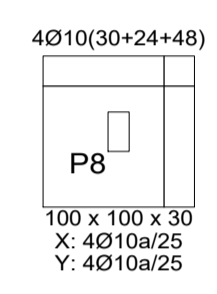
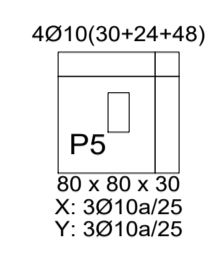
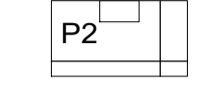


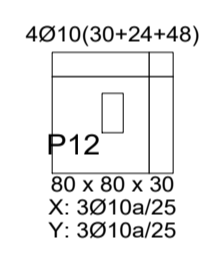
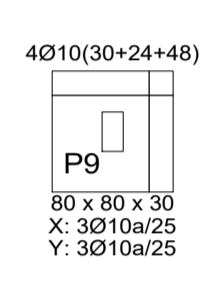
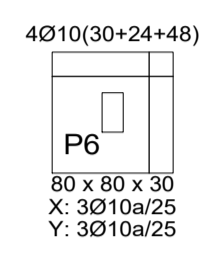
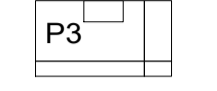
4Ø10(30+29+48)
105 x 105 x 35
Sup X: 5Ø10a/20
Sup Y: 5Ø10a/20
Inf X: 5Ø10a/20
Inf Y: 5Ø10a/20



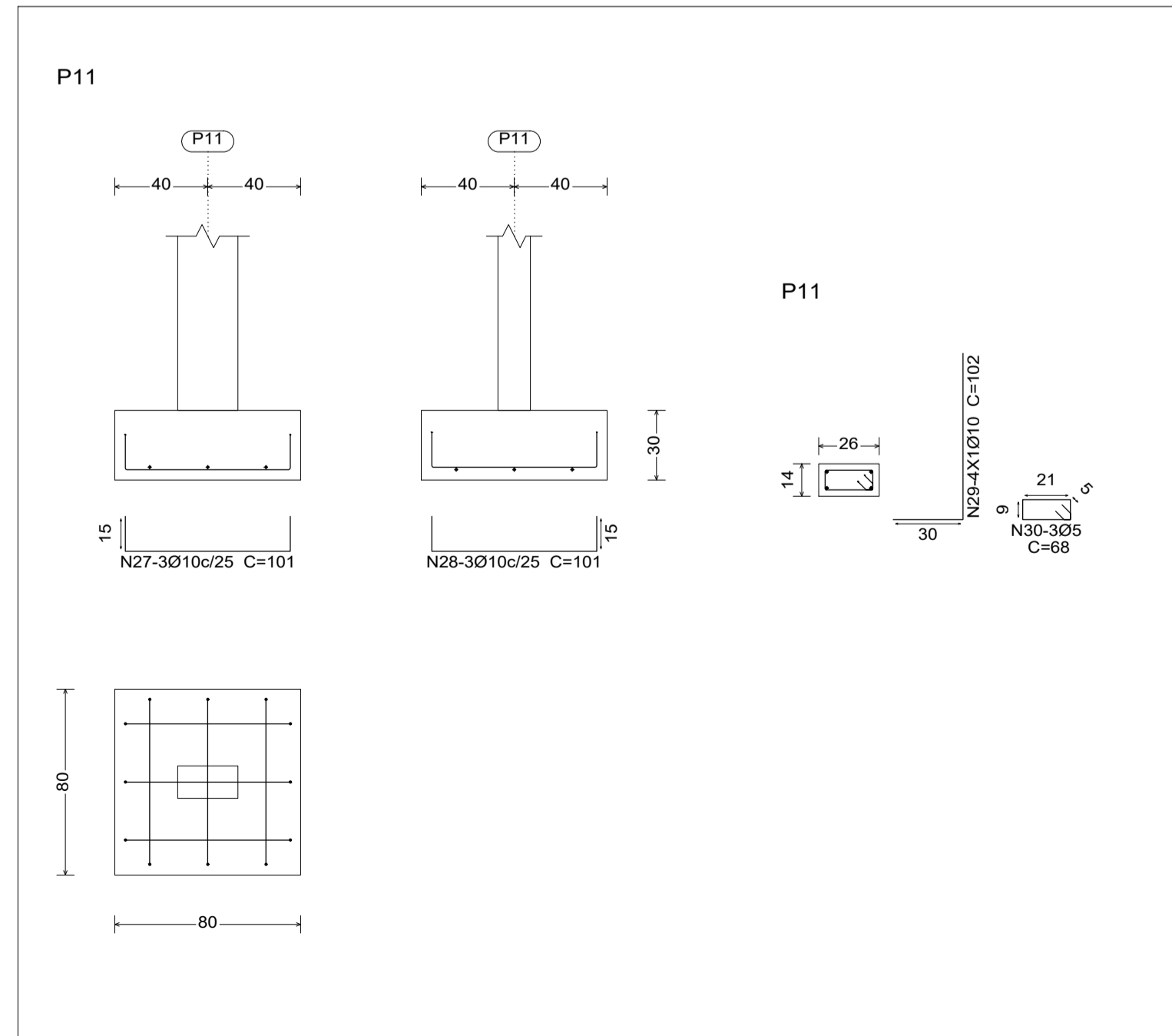
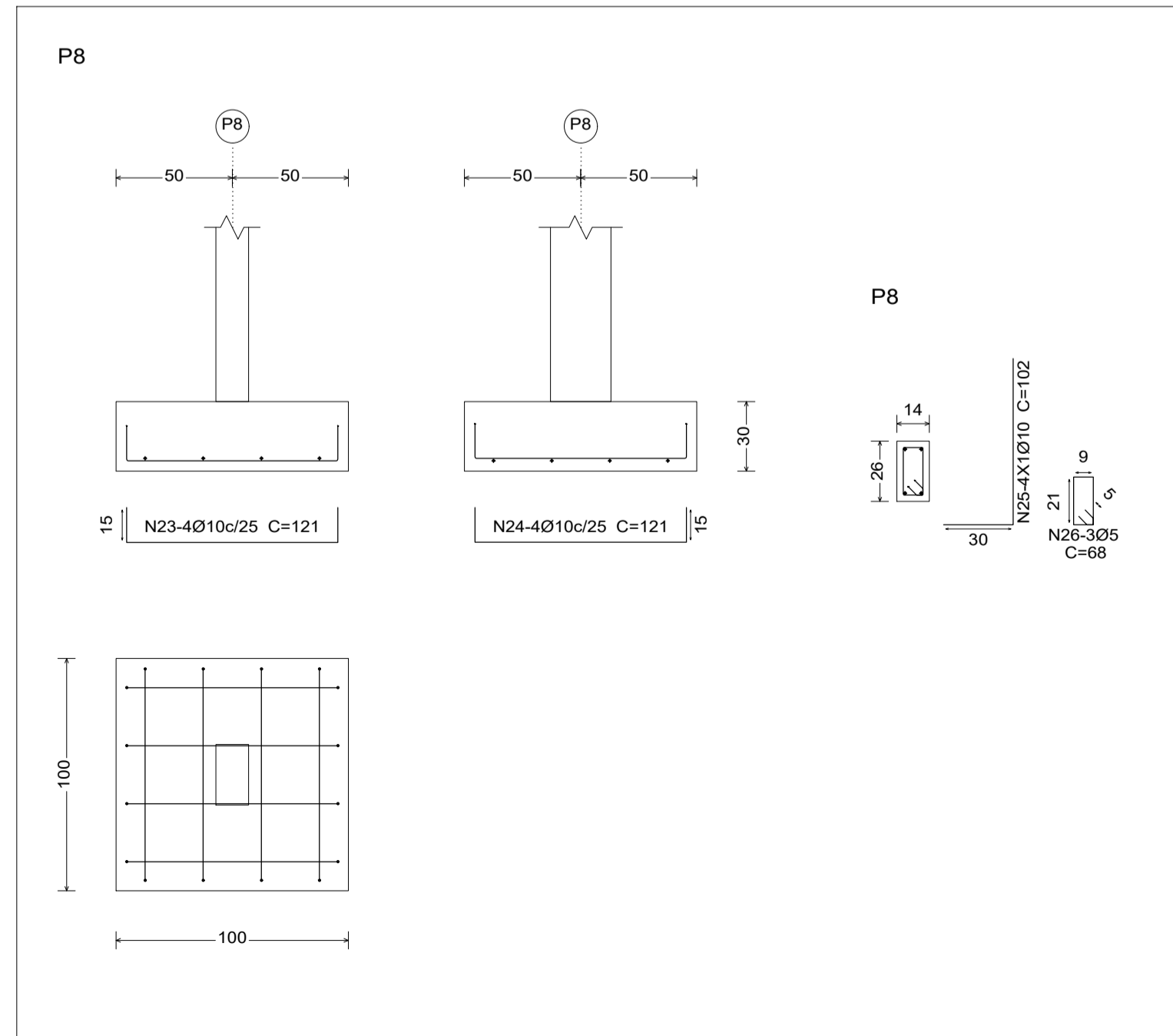
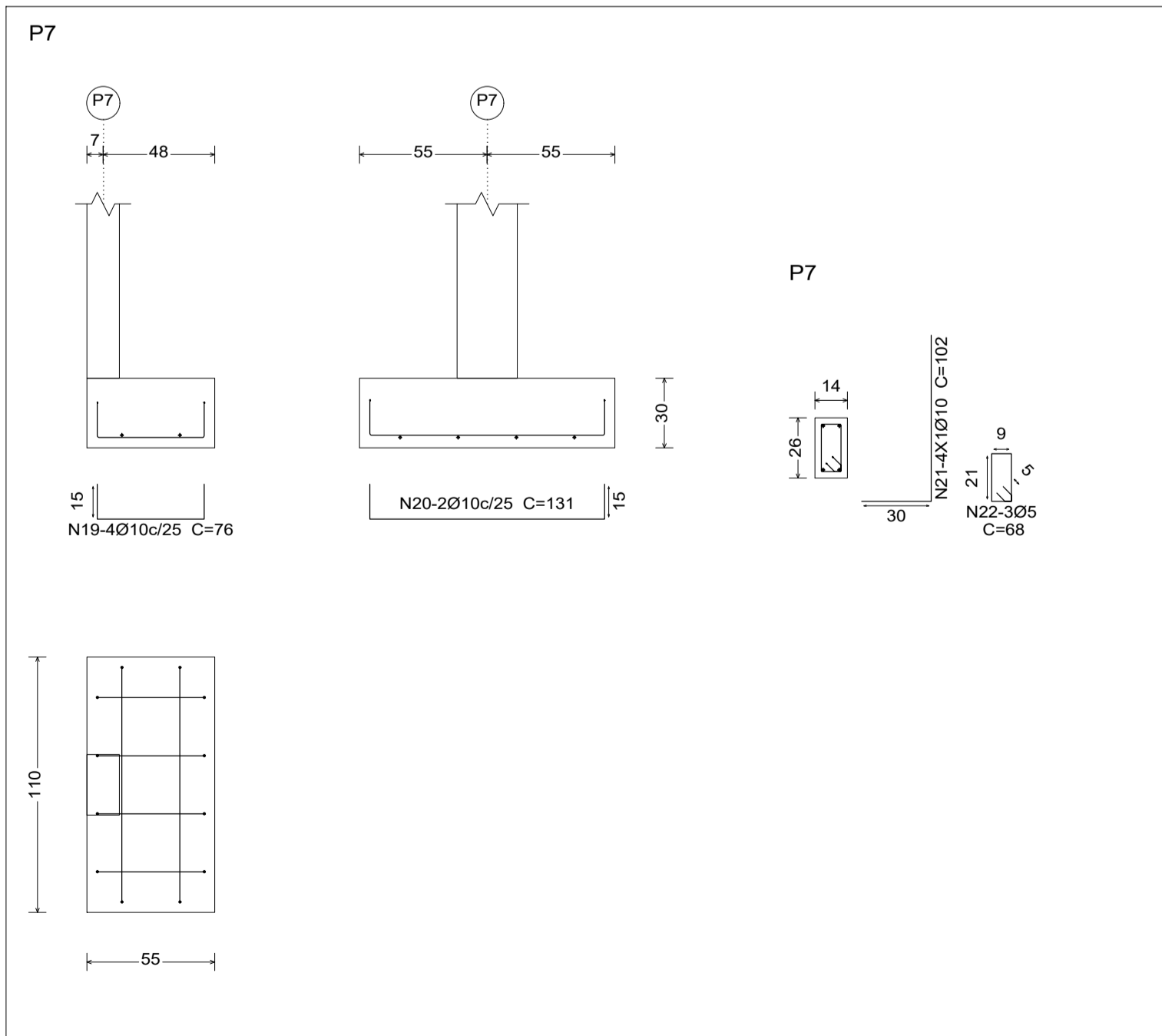
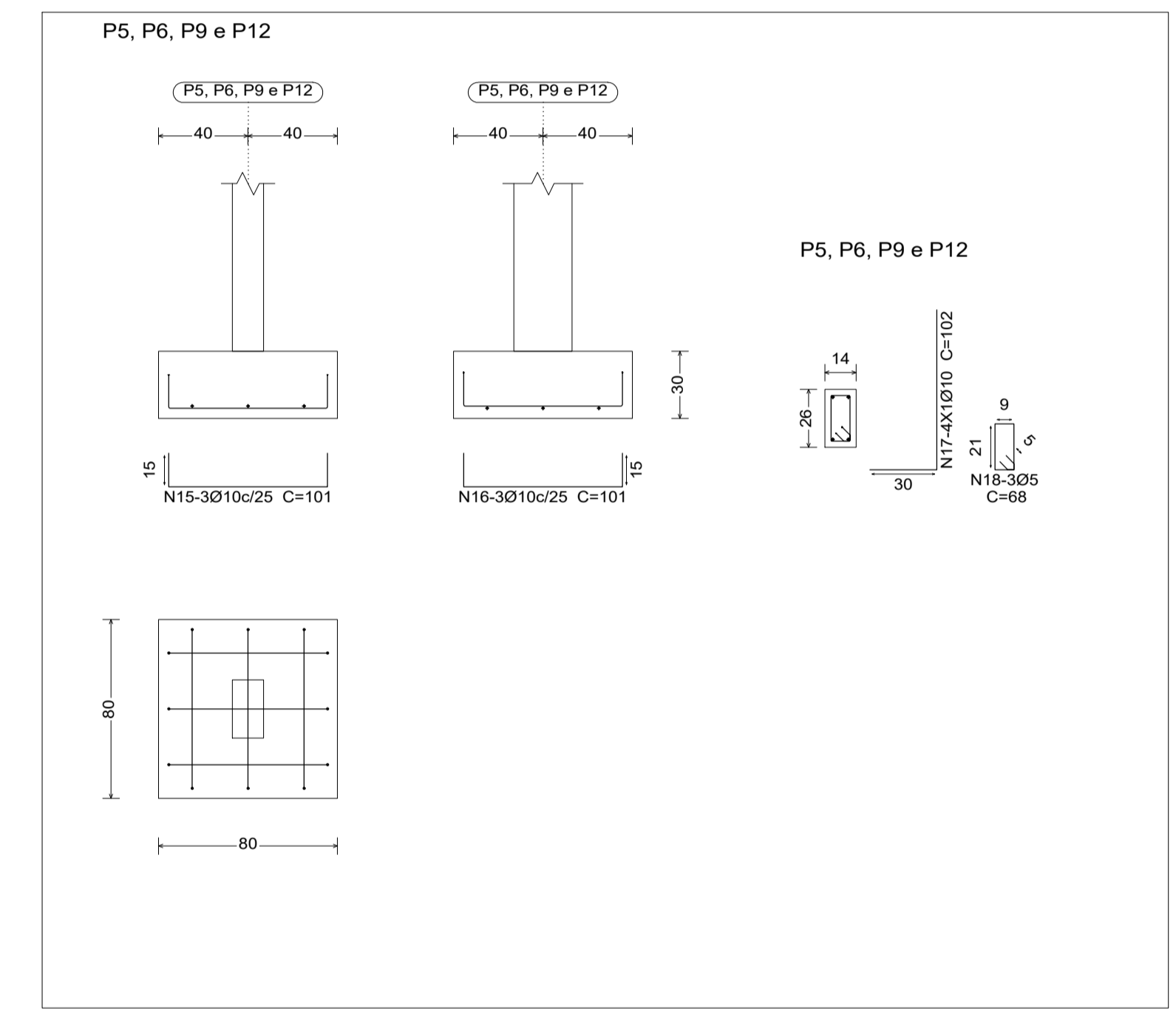
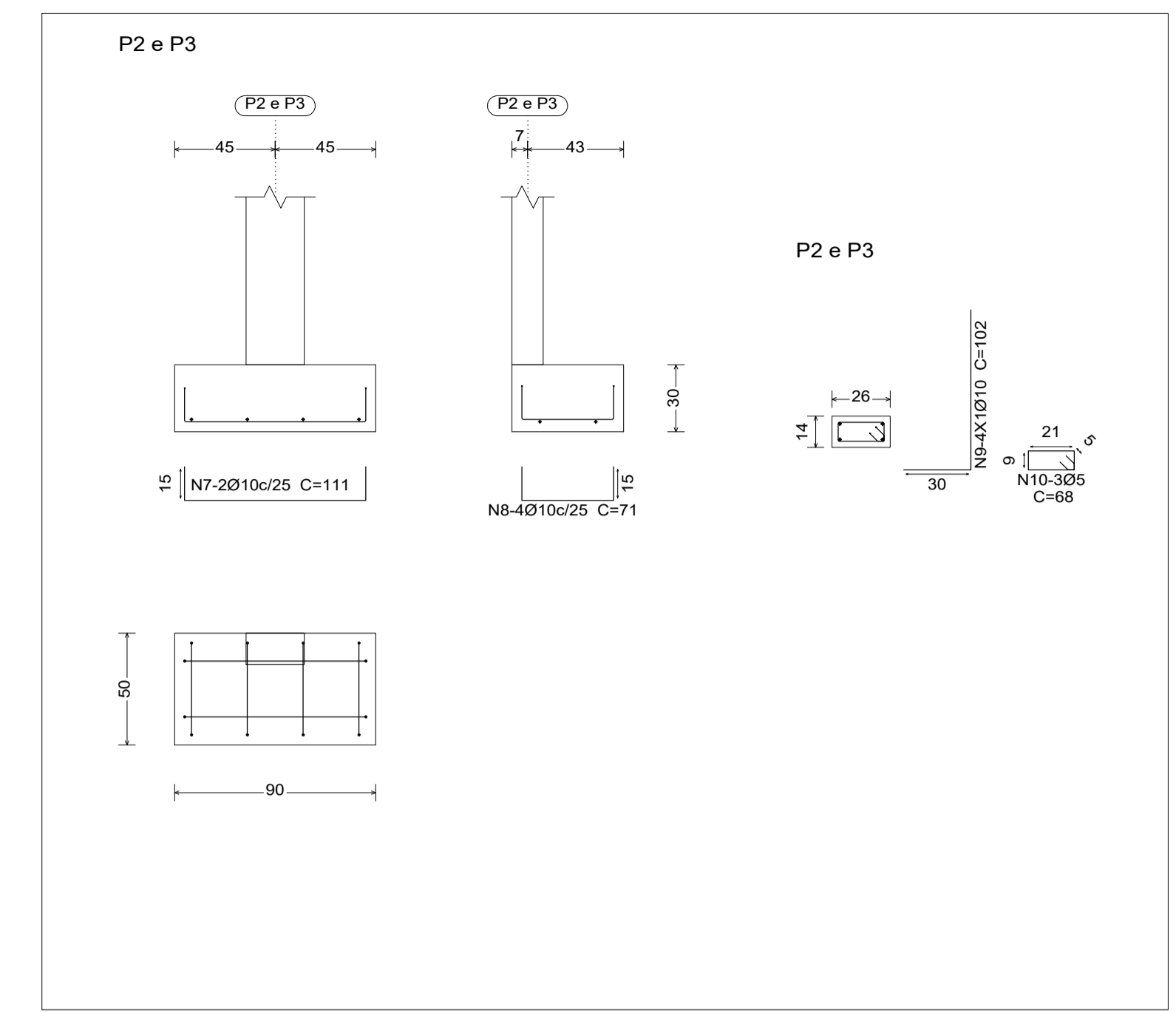
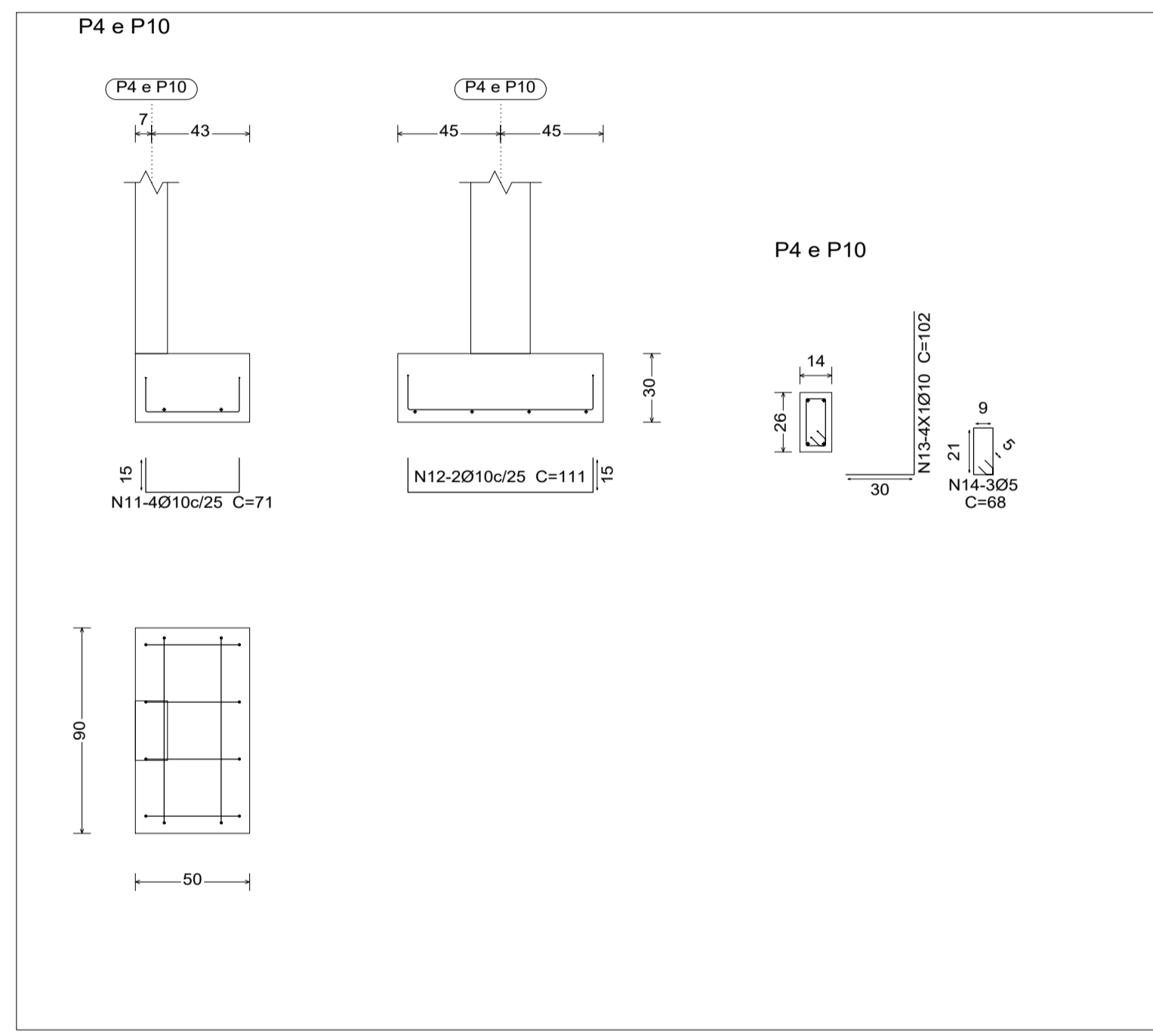
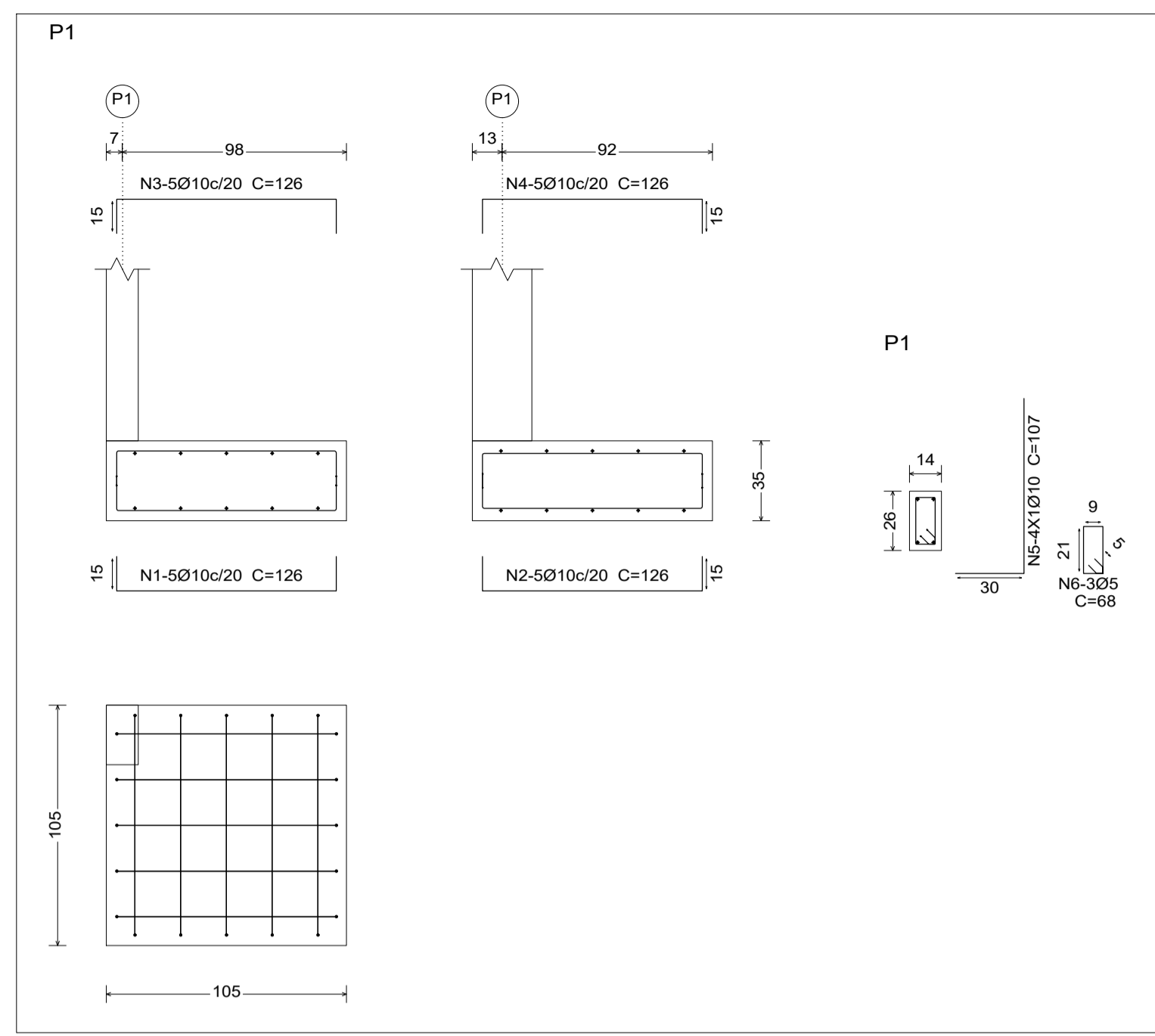
4Ø10(30+24+48)
90 x 50 x 30
X: 2Ø10a/25
Y: 4Ø10a/25



4Ø10(30+24+48)
90 x 50 x 30
X: 2Ø10a/25
Y: 4Ø10a/25



PLANTA FUNDAÇÃO
ESCALA: 1/50



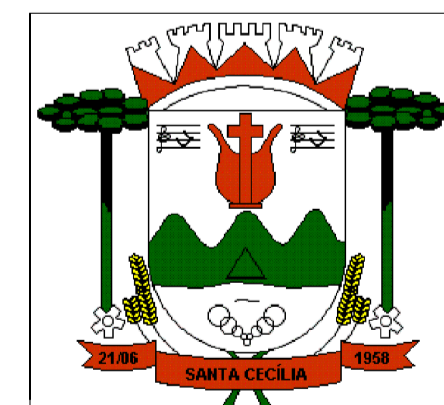
Elemento	Pos.	Diâm.	Q.	Pat. (cm)	Recta (cm)	Comp. (cm)	Total (cm)	CA-50 (kg)	CA-60 (kg)
P1	1	Ø10	5	15	96	15	126	630	3.9
	2	Ø10	5	15	96	15	126	630	3.9
	3	Ø10	5	15	96	15	126	630	3.9
	4	Ø10	5	15	96	15	126	630	3.9
	5	Ø10	4	30	77	107	428	68	2.6
	6	Ø5	3		68	68	204		0.3
Total+10%:								20.0	0.3
P2=P3	7	Ø10	2	15	81	15	111	222	1.4
	8	Ø10	4	15	41	15	71	284	1.8
	9	Ø10	4	30	72	102	408	68	2.5
	10	Ø5	3		68	68	204		0.3
Total+10%:								6.3	0.3
(x2):								12.6	0.6
P4=P10	11	Ø10	4	15	41	15	71	284	1.8
	12	Ø10	2	15	81	15	111	222	1.4
	13	Ø10	4	30	72	102	408	68	2.5
	14	Ø5	3		68	68	204		0.3
Total+10%:								6.3	0.3
(x2):								12.6	0.6
P5=P6=P9=P12	15	Ø10	3	15	71	15	101	303	1.9
	16	Ø10	3	15	71	15	101	303	1.9
	17	Ø10	4	30	72	102	408	68	2.5
18	Ø5	3		68	68	204		0.3	
Total+10%:								6.9	0.3
(x4):								27.6	1.2
P7	19	Ø10	4	15	46	15	76	304	1.9
	20	Ø10	2	15	101	15	131	262	1.6
	21	Ø10	4	30	72	102	408	68	2.5
22	Ø5	3		68	68	204		0.3	
Total+10%:								6.6	0.3
P8	23	Ø10	4	15	91	15	121	484	3.0
	24	Ø10	4	15	91	15	121	484	3.0
	25	Ø10	4	30	72	102	408	68	2.5
	26	Ø5	3		68	68	204		0.3
Total+10%:								9.4	0.3
P11	27	Ø10	3	15	71	15	101	303	1.9
	28	Ø10	3	15	71	15	101	303	1.9
	29	Ø10	4	30	72	102	408	68	2.5
	30	Ø5	3		68	68	204		0.3
Total+10%:								6.9	0.3
(x5):								34.5	1.5
Ø10:								95.7	0.0
Total:								95.7	3.6

Referências	Dimensões (cm)	Altura (cm)	Armadura ref. X	Armadura ref. Y	Armadura sup. X	Armadura sup. Y
P1	105x105	35	5Ø10a/20	5Ø10a/20	5Ø10a/20	5Ø10a/20
P2 e P3	90x50	30	2Ø10a/25	4Ø10a/25		
P4 e P10	50x90	30	4Ø10a/25	3Ø10a/25		
P5, P6, P9, P11 e P12	80x80	30	3Ø10a/25	2Ø10a/25		
P7	55x110	30	4Ø10a/25	2Ø10a/25		
P8	100x100	30	4Ø10a/25	4Ø10a/25		

Resumo Aço Fundação	Comp. total (m)	Peso+10% (kg)	Total
CA-50 Ø10	140.2	95	95
CA-60 Ø5	24.5	4	4
Total			99

Fundação
Fundação
Betao. C20, con.desfav.
Escala: 1:50

Arranques
nØxx(aa+bb+cc)
TCS
aa | bb



PREFEITURA DO MUNICÍPIO
SANTA CECÍLIA
ENGENHARIA E PROJETOS
R. JOÃO GOETTEN SOBRINHO - CENTRO SANTA CECÍLIA, SC
FONE: (49) 3244-2032

PROJETO: ESTRUTURAL	ÁREA DA OBRA: 983.06 m²
DESCRIÇÃO: Planta de fundação, detalhes sapatas	DATA: 03/2021
OBRA: Reforma da Praça Francisco Lucas	REVISÃO: R01
LOCAL: Avenida Nereu Ramos / Rua Papa João XXIII	DESENHISTA: André
DEPARTAMENTO TÉCNICO DE ENGENHARIA:	ESCALA: Indicada
Marcia Ely Puttkammer da Cruz Arquileta / Urbanista CAU nº A 143391-1	Matheus José Soares Assi Engenheiro Civil CREA/SC 154903-6
André Pereira Nunes Engenheiro Civil CREA/SC 156114-8	FOLHA: 02/06
RESPONSÁVEL: Alessandra Aparecida Garcia - Prefeita Municipal de Santa Cecília / SC CNPJ Nº 85.997.237.000/141	