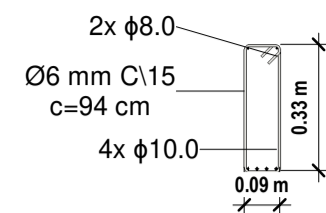
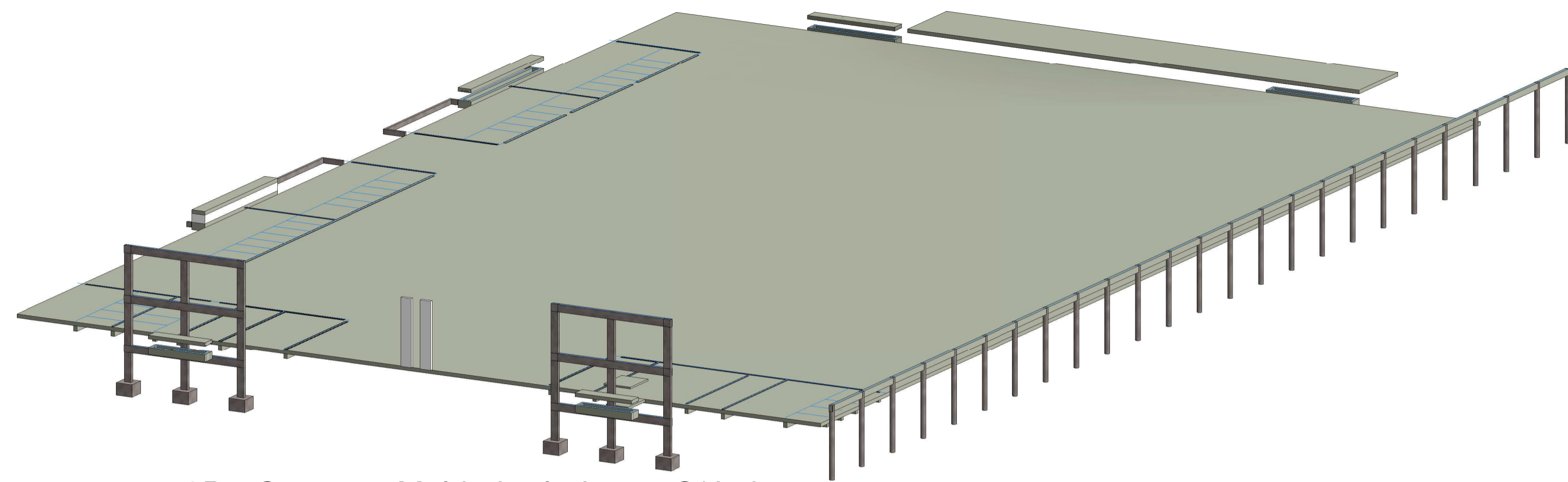


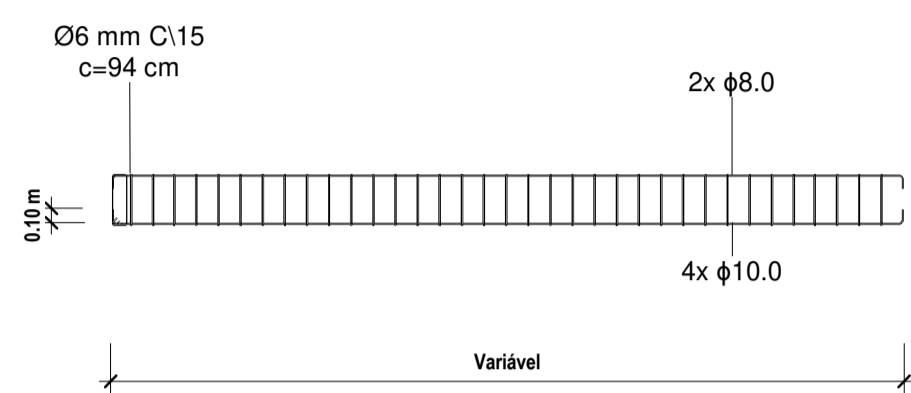
3 Baldrame Internas Ginásio
1 : 20



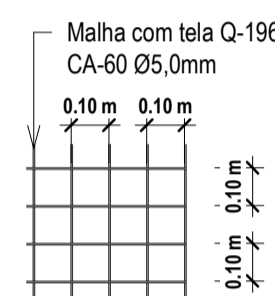
4 Corte Armaduta das Vigas Baldrame
1 : 20



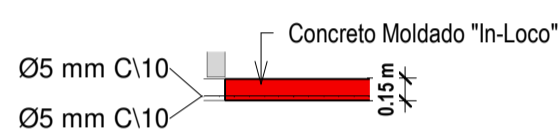
1 3D - Concreto Moldado "In-Loco" C/ Lajes



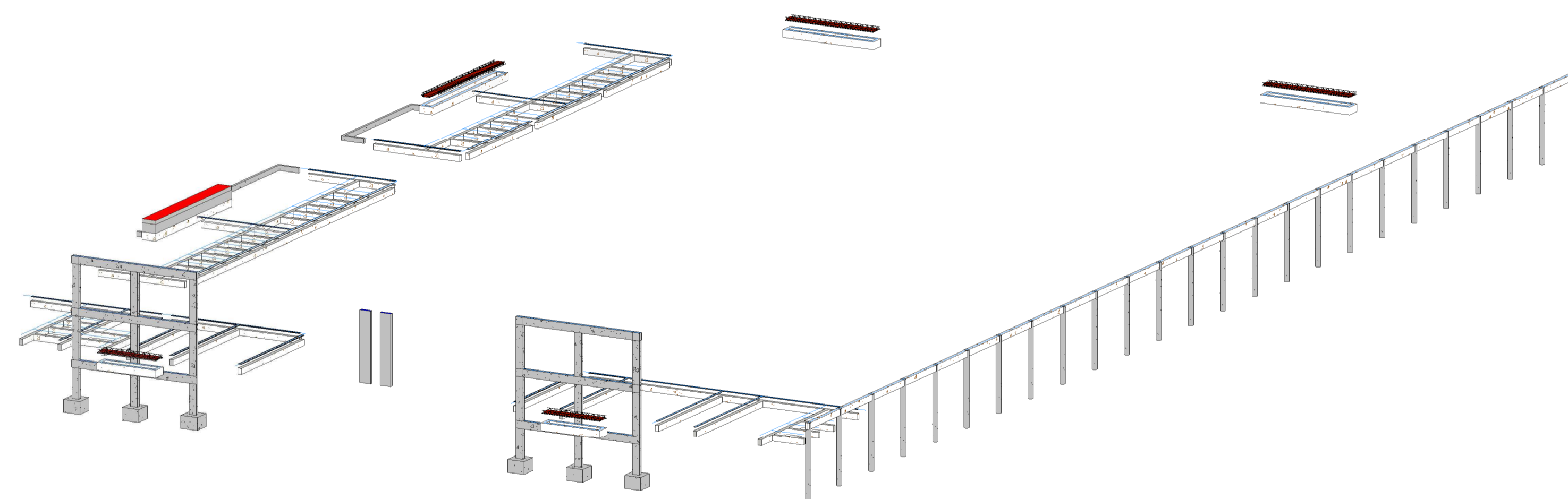
5 Detalhe Armadura das Vigas Baldrame
1 : 50



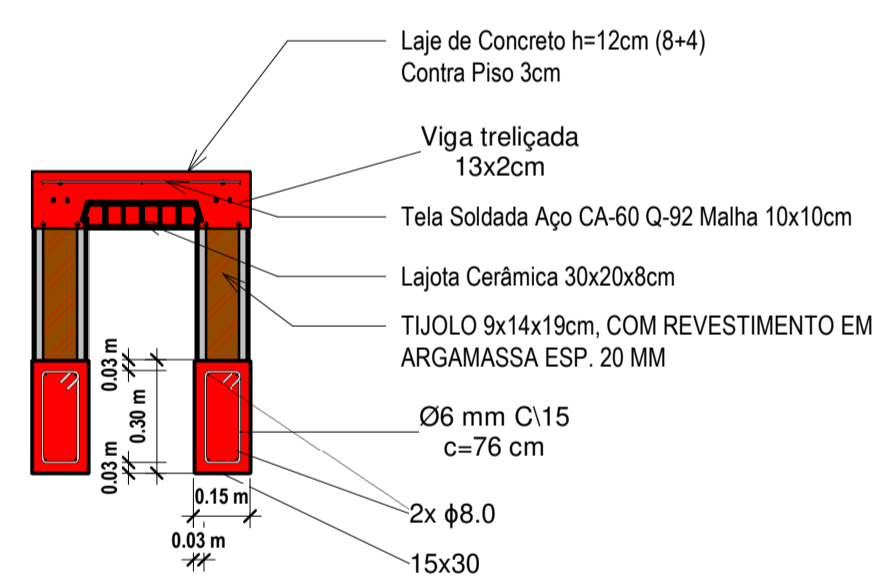
7 Detalhe Armadura da Lajes Moldadas "In-Loco"
1 : 50



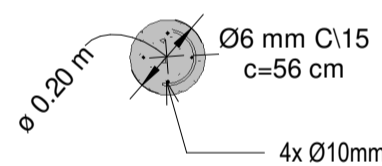
6 Detalhe Lajes Moldada "In-Loco"
1 : 50



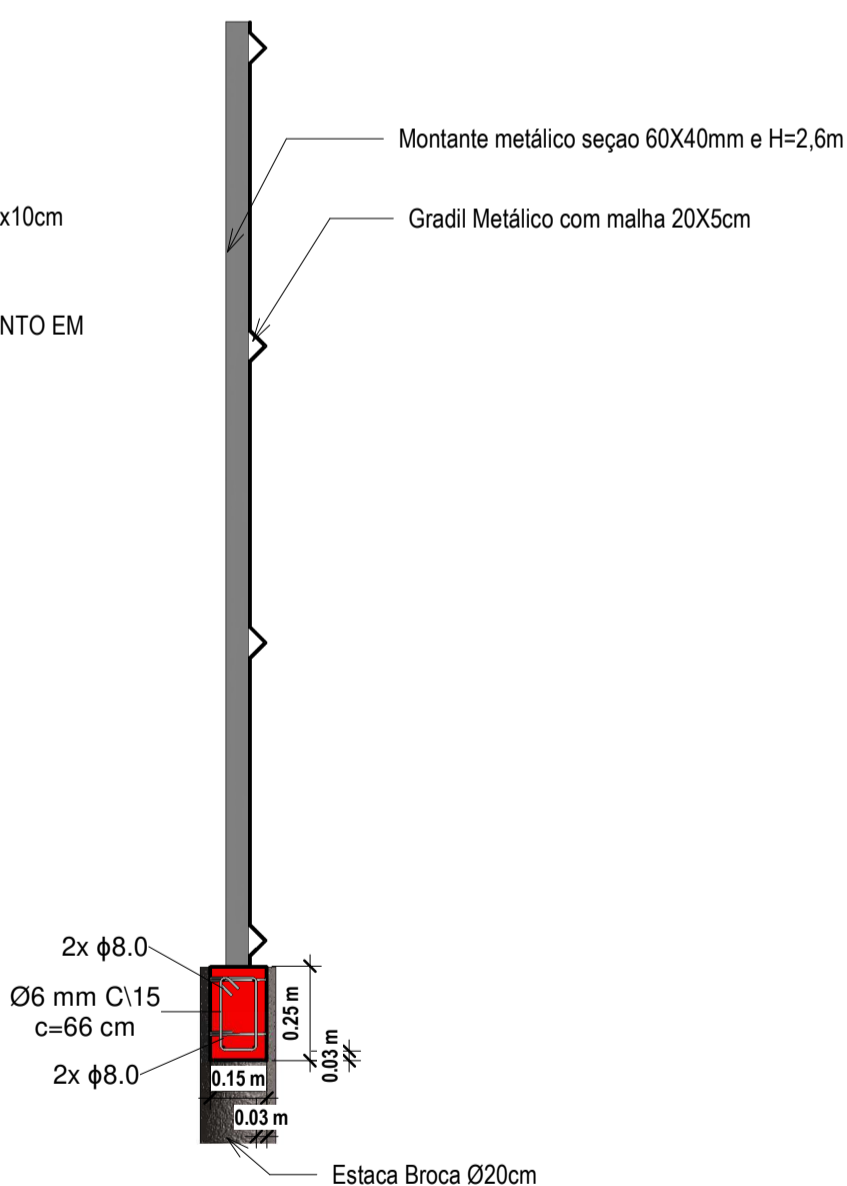
2 3D - Concreto Moldado "In-Loco" S/ Lajes



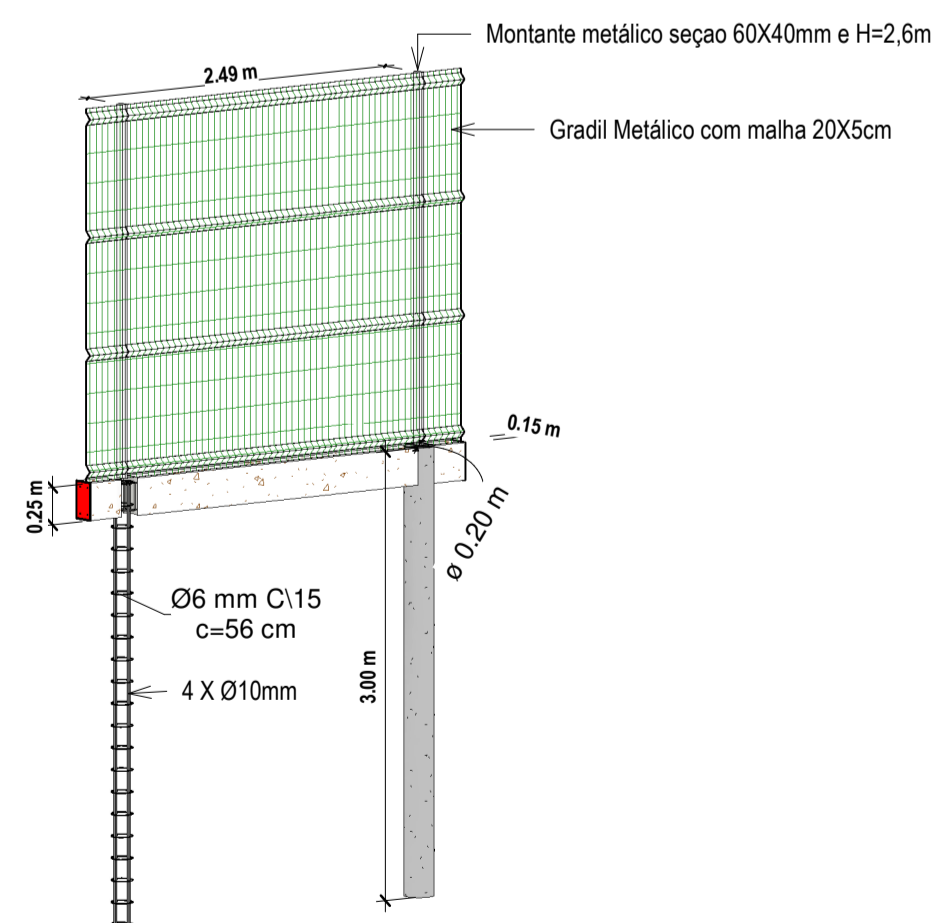
8 Bancos de Concreto
1 : 20



10 Estaca do Gradil
1 : 20



9 Corte Gradil
1 : 20



11 Detalhe Gradil Concreto



PREFEITURA DO MUNICÍPIO DE
SANTA CECÍLIA
ENGENHARIA E PROJETOS
R. JOÃO GOETTEN SOBRINHO - CENTRO SANTA CECÍLIA, SC
FONE: (49) 3244-2032

Título: Arena Poliesportiva		Projeto: Estrutural
Local da obra: Rua Guilherme Rauem nº308		Data: 11/04/2022
Engº Resp. Projeto: Rafael Roman Vanz	Engº Resp. Execução: x	Escala: Indicada
Eng. Civil	x	Desenhista: Rafael R. V.
CREA/SC 159738-4	x	Construir (m²): 2390,13
Proprietário/Responsável: NOME: Alessandra Aparecida Garcia CNPJ: 85.997.237/0001-41		Terreno (m²): 2595,65
		Folha: 04/05