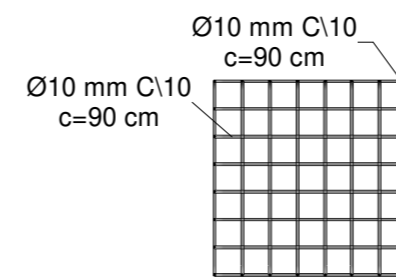
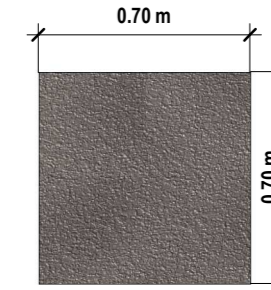


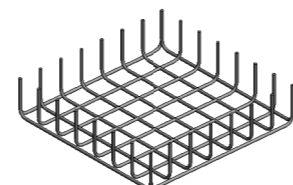
2 3D - Sapatas Parede



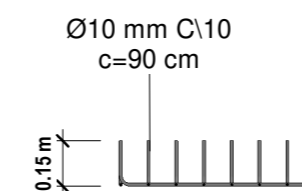
4 Armadura da Sapatas Paredes
1 : 25



6 Sapata das Paredes
1 : 25

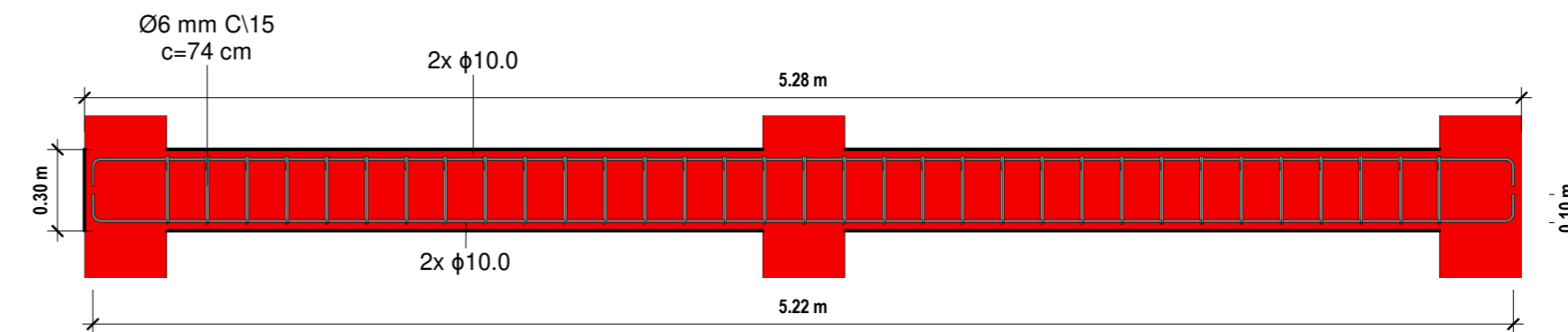


3 3D - Aço Das Sapatas da Parede

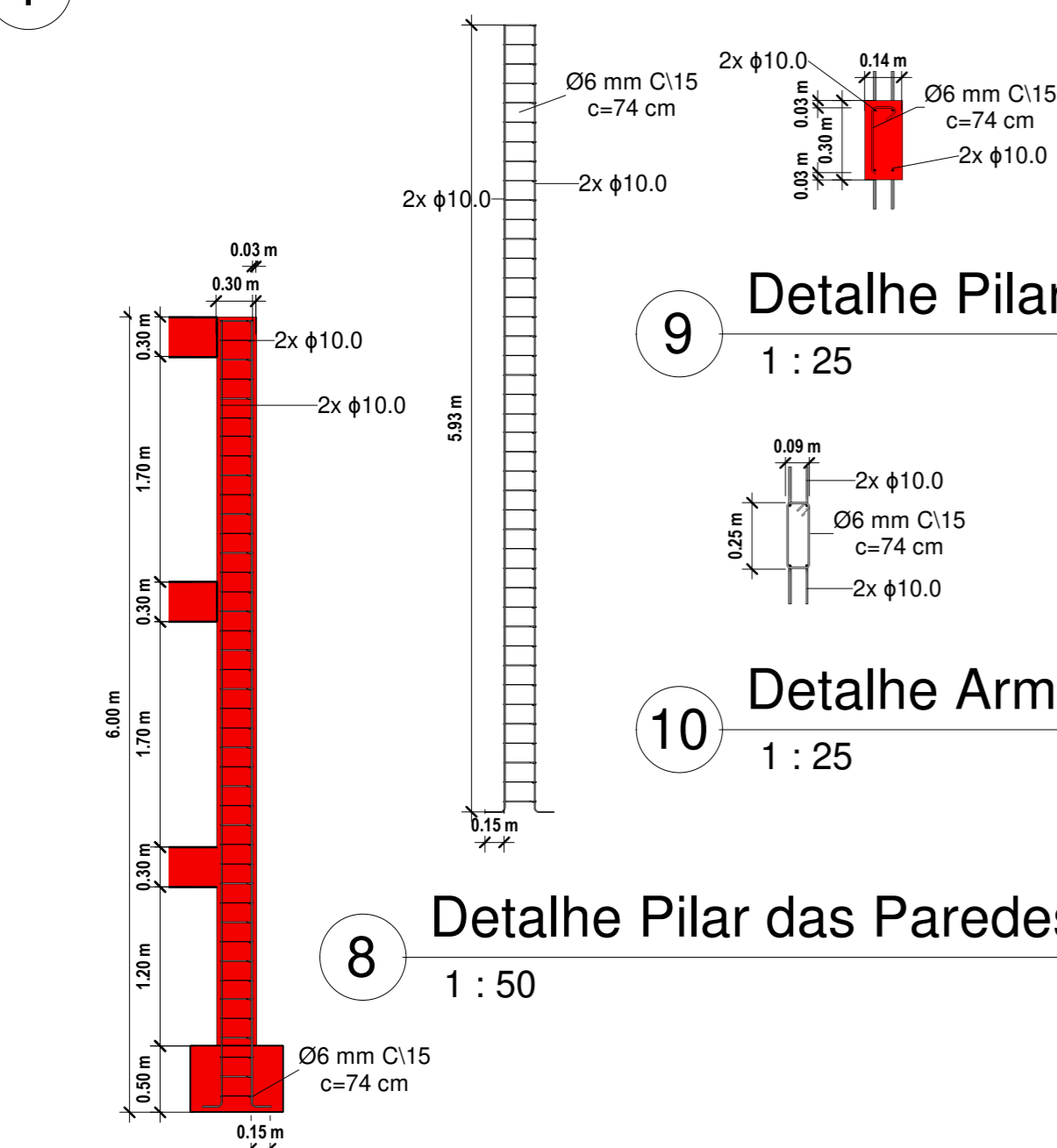


5 Corte das Sapatas
1 : 25

1 Detalhe Geral Paredes



11 Detalhe Vigas da Parede Concreto
1 : 25

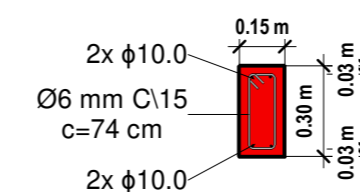


7 Detalhe Pilar das Paredes Concreto
1 : 50

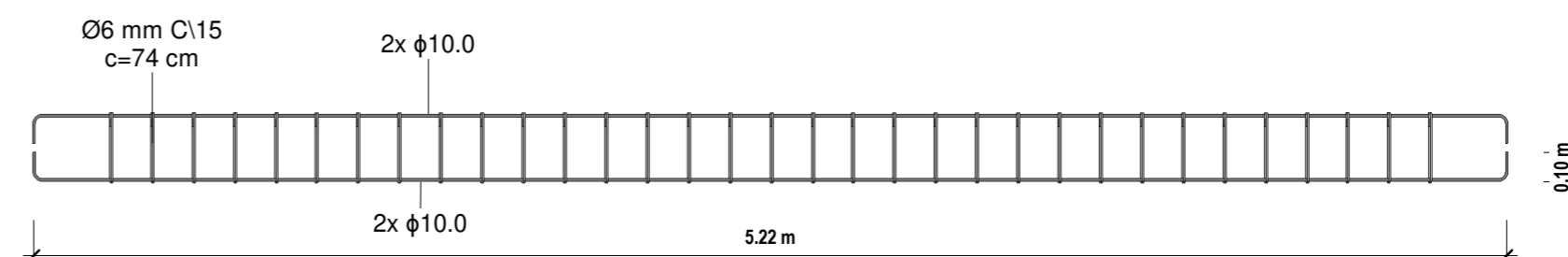
9 Detalhe Pilar das Paredes
1 : 25

10 Detalhe Armadura Pilar das Paredes
1 : 25

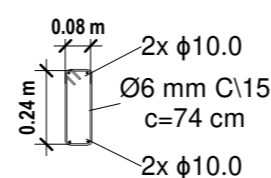
8 Detalhe Pilar das Paredes Armadura
1 : 50



13 Corte Vigas da Parede
1 : 25



12 Detalhe Vigas da Parede Armadura
1 : 25



14 Detalhe Armadura da Viga das Paredes
1 : 25

		PREFEITURA DO MUNICÍPIO DE SANTA CECÍLIA ENGENHARIA E PROJETOS R. JOÃO GOETTEN SOBRINHO - CENTRO SANTA CECÍLIA, SC FONE: (49) 3244-2032	
		Título: Arena Poliesportiva Local da obra: Rua Guilherme Rauem nº308 Engº Resp. Projeto: Rafael Roman Vanz Engº Resp. Execução:	Projeto: Estrutural Escala: Indicada Desenhista: Rafael R. V. Construir (m²): 2390,13 Terreno (m²): 2595,65 Folha: 05/05
Proprietário/Responsável: NOME: Alessandra Aparecida Garcia CNPJ: 85.997.237/0001-41		Data: 11/04/2022 Escala: Indicada Construir (m²): 2390,13 Terreno (m²): 2595,65 Folha: 05/05	