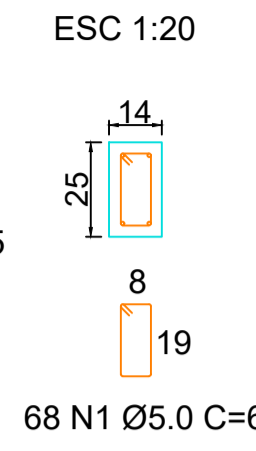
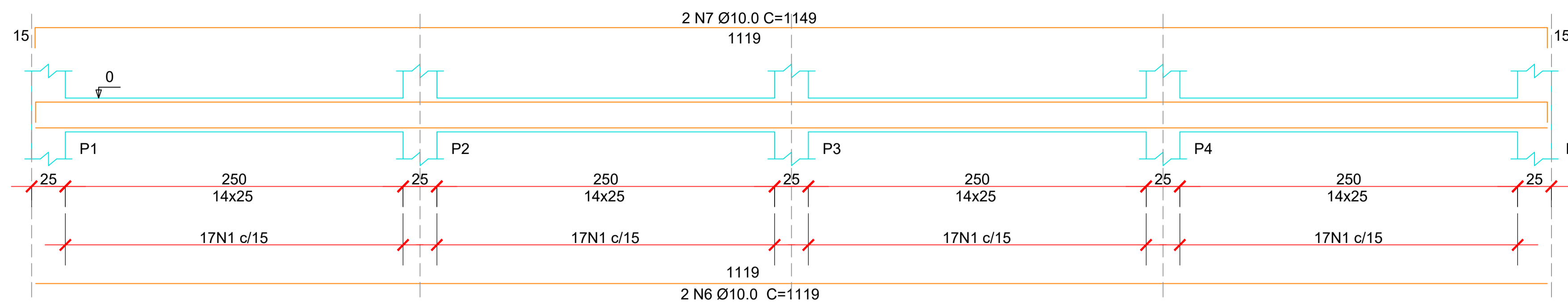
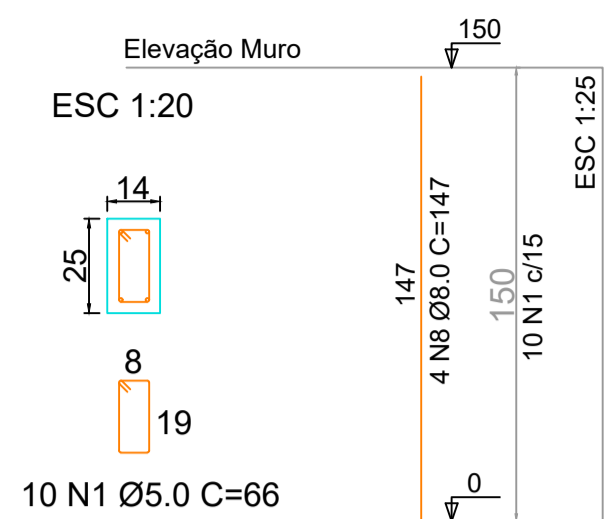


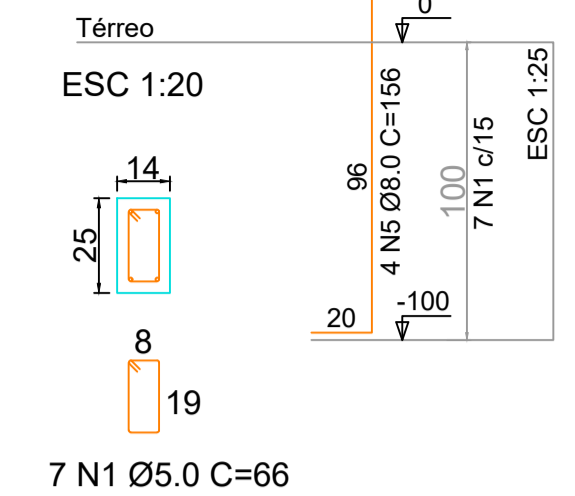
VB MURO 01
ESC 1:25



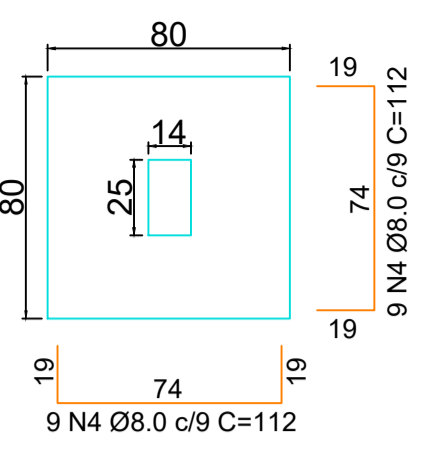
P1=P2=P3=P4=P5=P6=P7=P8=P9



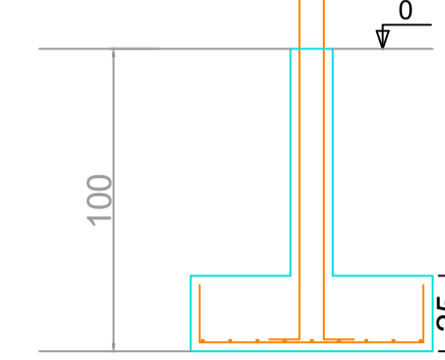
S1=S2=S3=S4=S5=S6=S7=S8=S9=S10



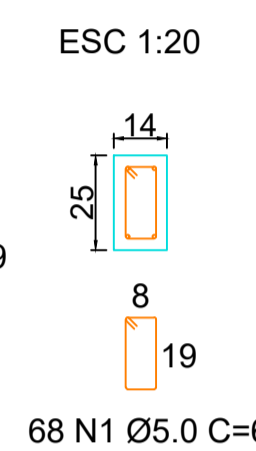
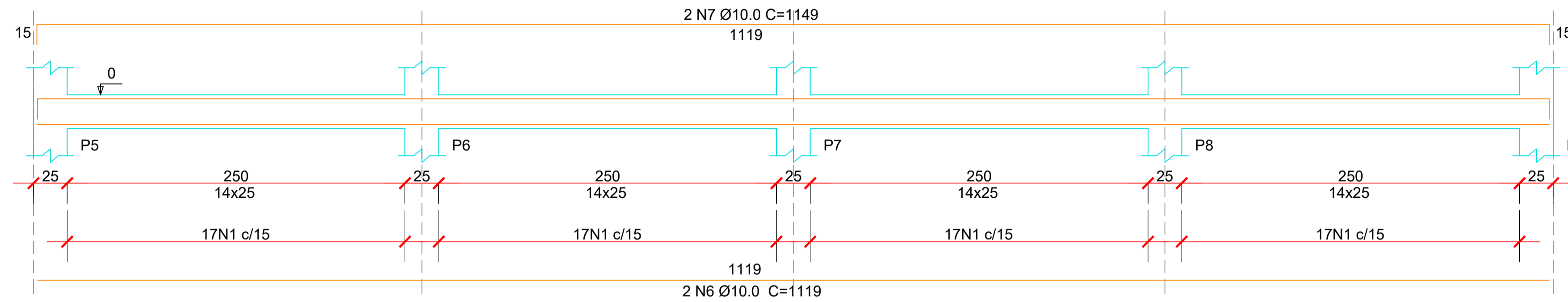
PLANTA
ESC 1:25



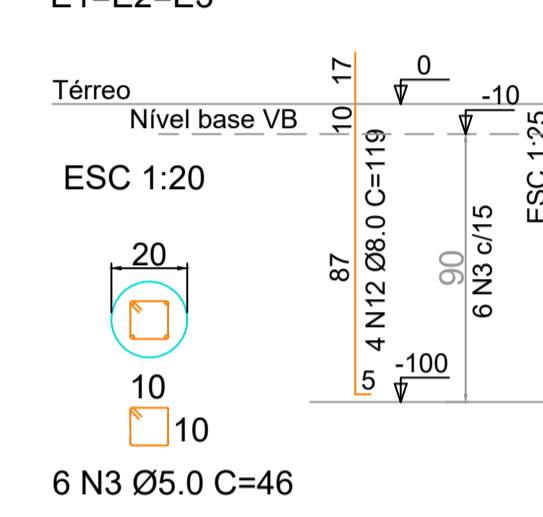
CORTE
ESC 1:25



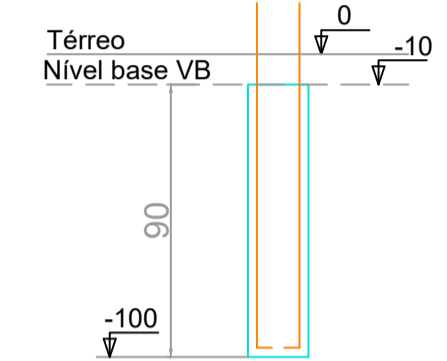
VB MURO 02
ESC 1:25



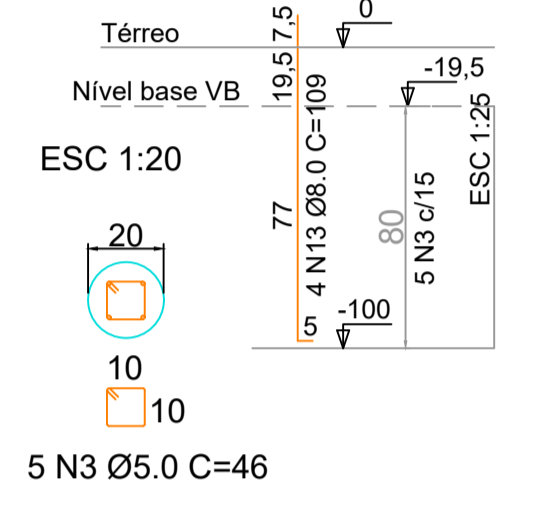
ESTACAS
E1=E2=E3



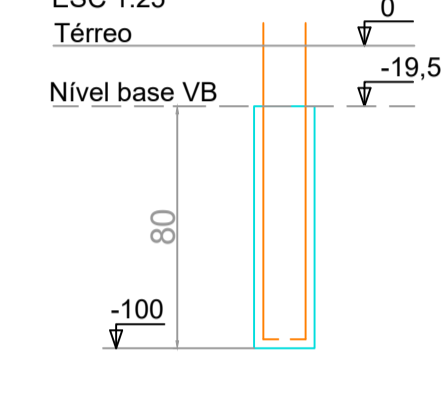
CORTE
ESC 1:25



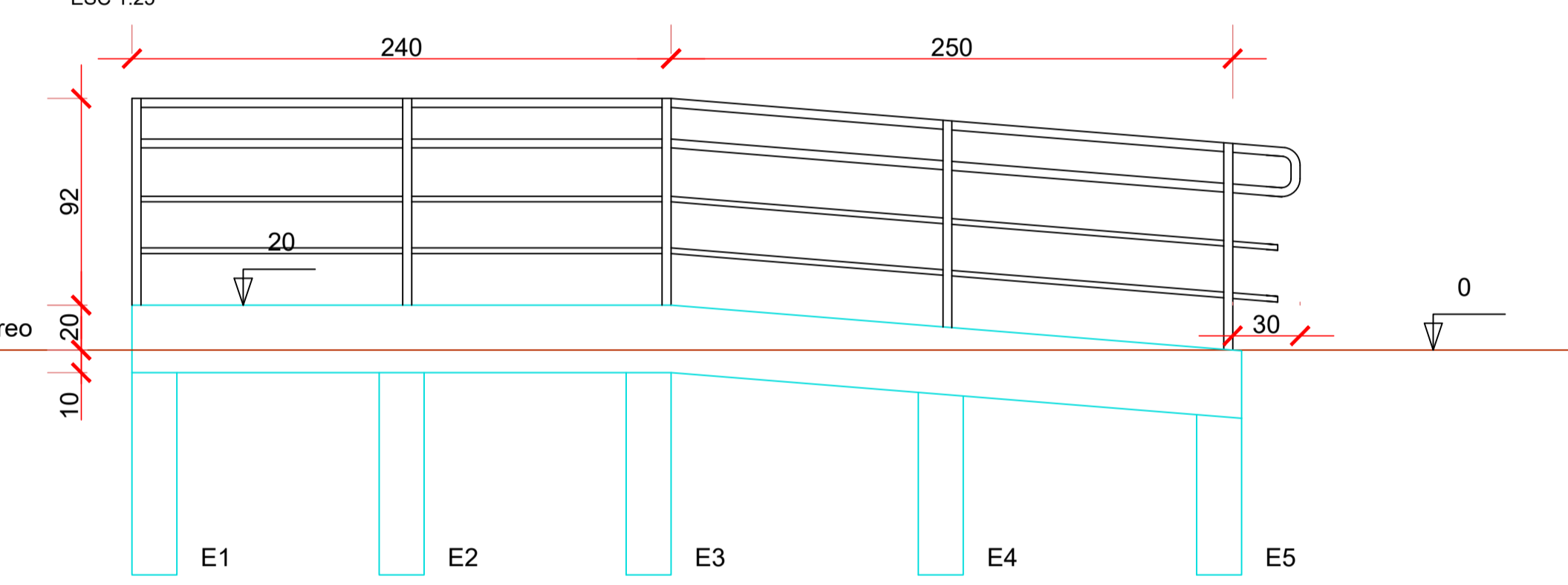
E4



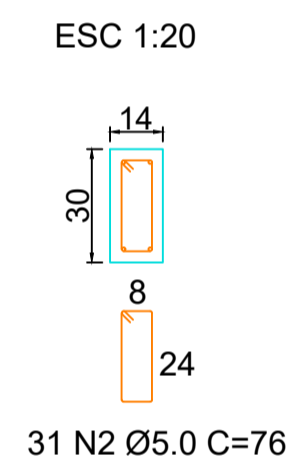
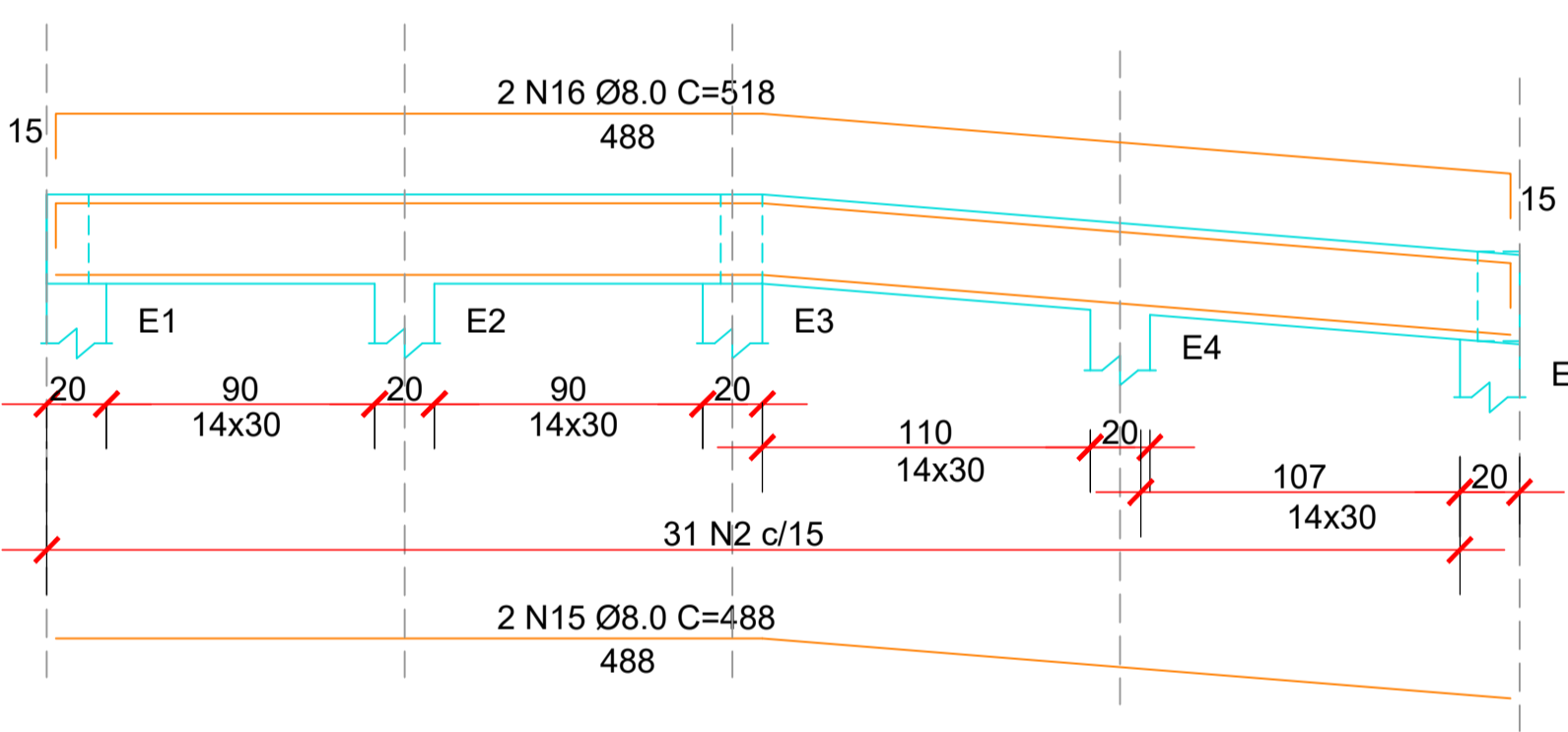
CORTE
ESC 1:25



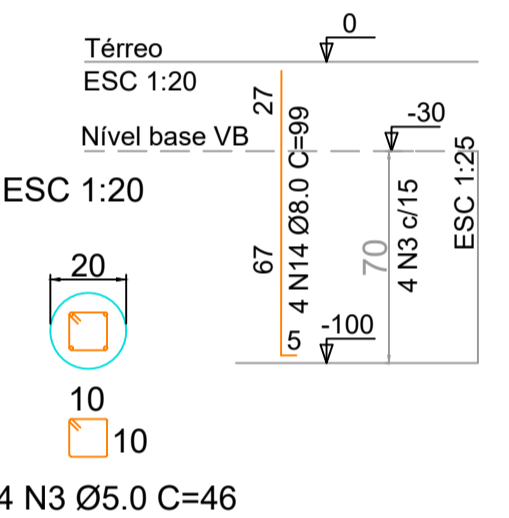
RAMPA A=B
ESC 1:25



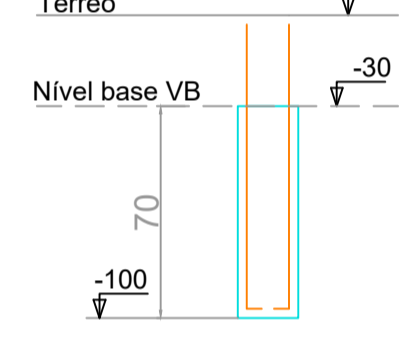
VB 04 = VB 05
ESC 1:25



E5

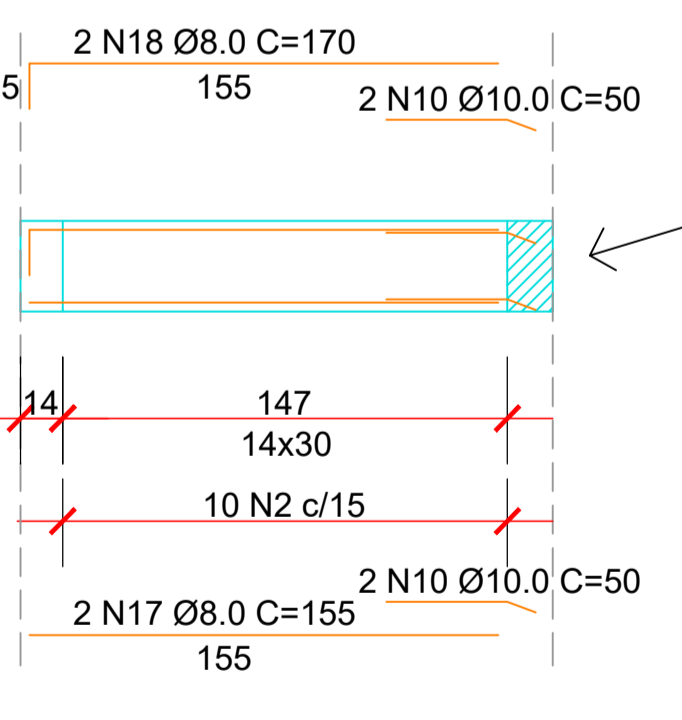


CORTE
ESC 1:25

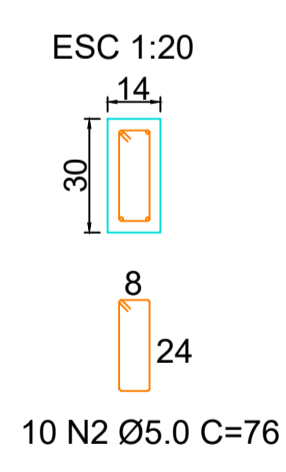


RELAÇÃO DE AÇO			
ACO	N	DIAMETRO	C. TOTAL (M)
CA80	1	5.0	234.30
	2	5.0	77.52
	3	5.0	12.42
CA50	4	8.0	201.60
	5	8.0	62.40
	6	10.0	44.76
	7	10.0	45.96
	8	8.0	52.92
	9	10.0	15.16
	10	10.0	20.00
	11	10.0	16.52
	12	8.0	14.28
	13	8.0	4.36
	14	8.0	3.96
	15	8.0	19.52
	16	8.0	20.72
	17	8.0	18.60
	18	8.0	20.40
RELAÇÃO DE AÇO TOTAL			
CA80		5.0	324.24
CA50		8.0	418.76
		10.0	142.20

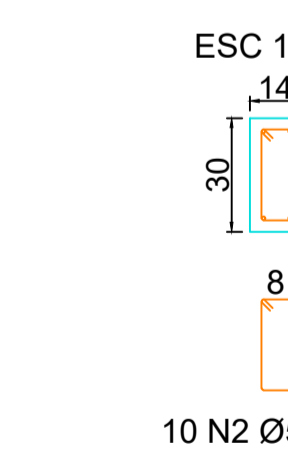
VB 02 = VB 06
ESC 1:25



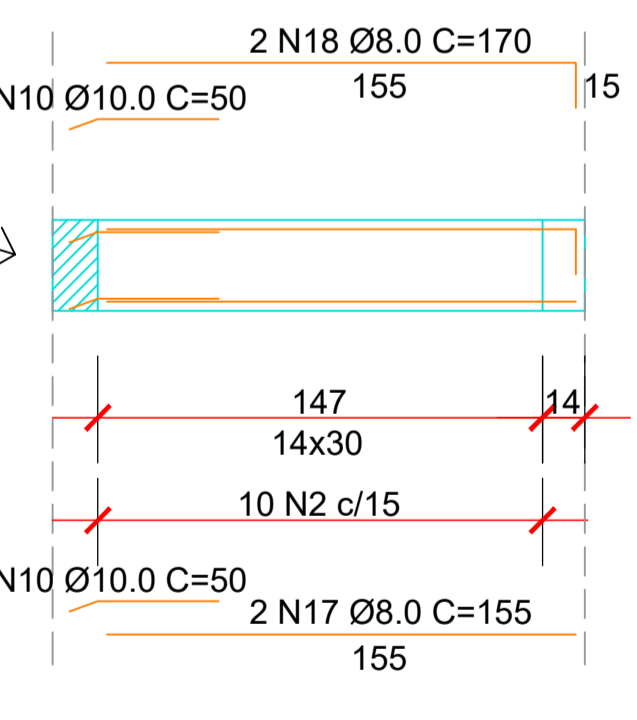
FURAR VIGA BALDRAME EXISTE COM BROCA DE 10MM PARA CHUMBAR A EMENDA DE ANCORAGEM DA NOVA VIGA BALDRAME



FURAR VIGA BALDRAME EXISTE COM BROCA DE 10MM PARA CHUMBAR A EMENDA DE ANCORAGEM DA NOVA VIGA BALDRAME

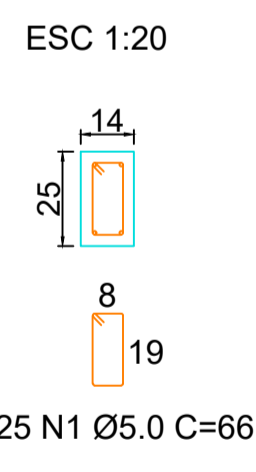
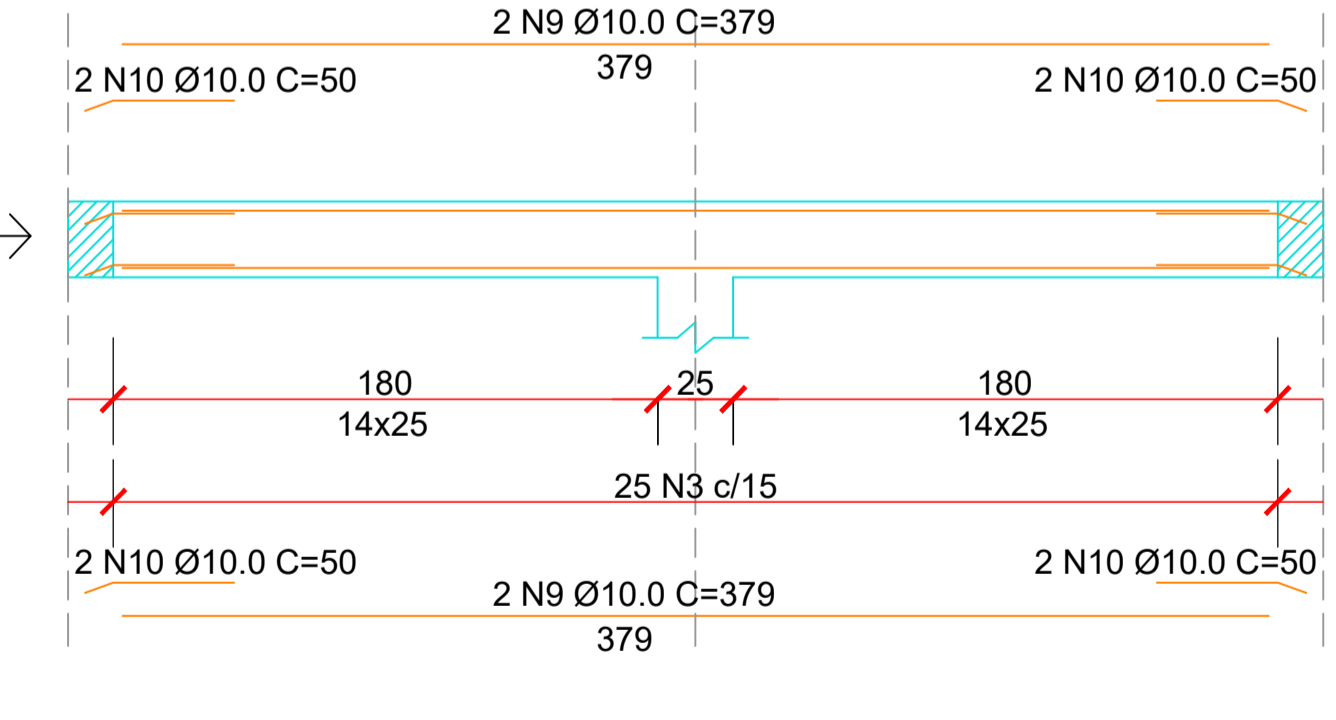


VB 03 = VB 08
ESC 1:25

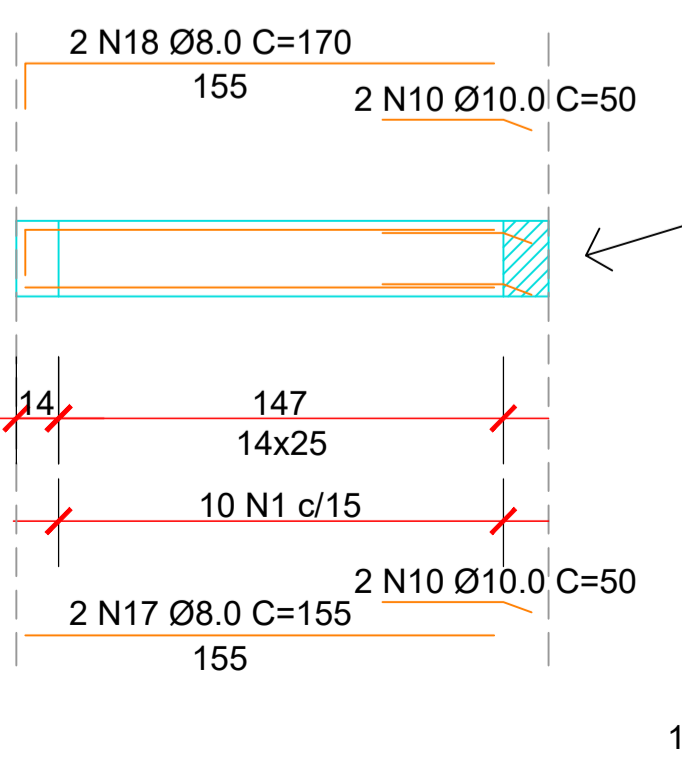


FURAR VIGA BALDRAME EXISTE COM BROCA DE 10MM PARA CHUMBAR A EMENDA DE ANCORAGEM DA NOVA VIGA BALDRAME

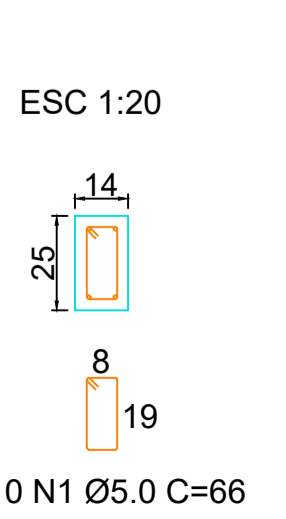
VB 01
ESC 1:25



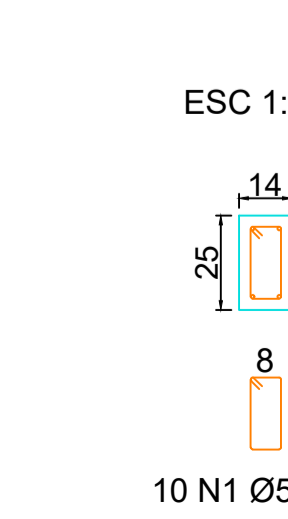
VB 09
ESC 1:25



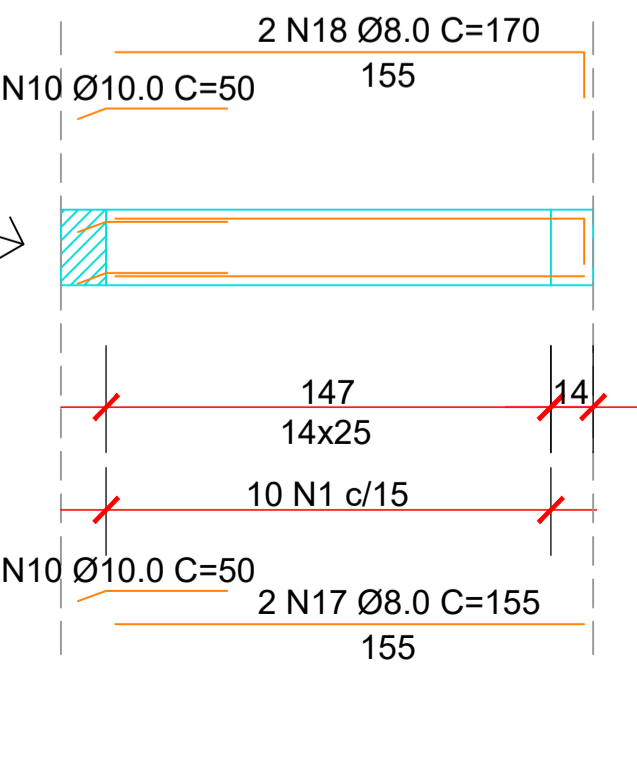
FURAR VIGA BALDRAME EXISTE COM BROCA DE 10MM PARA CHUMBAR A EMENDA DE ANCORAGEM DA NOVA VIGA BALDRAME



FURAR VIGA BALDRAME EXISTE COM BROCA DE 10MM PARA CHUMBAR A EMENDA DE ANCORAGEM DA NOVA VIGA BALDRAME

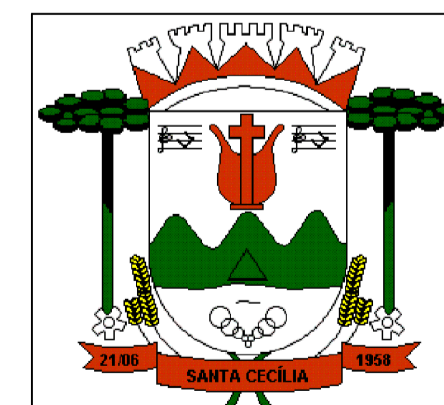
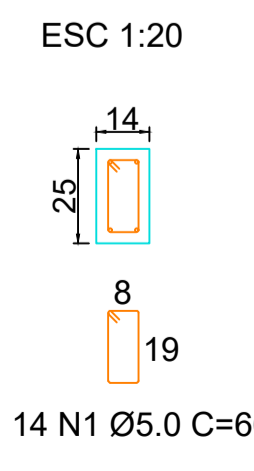
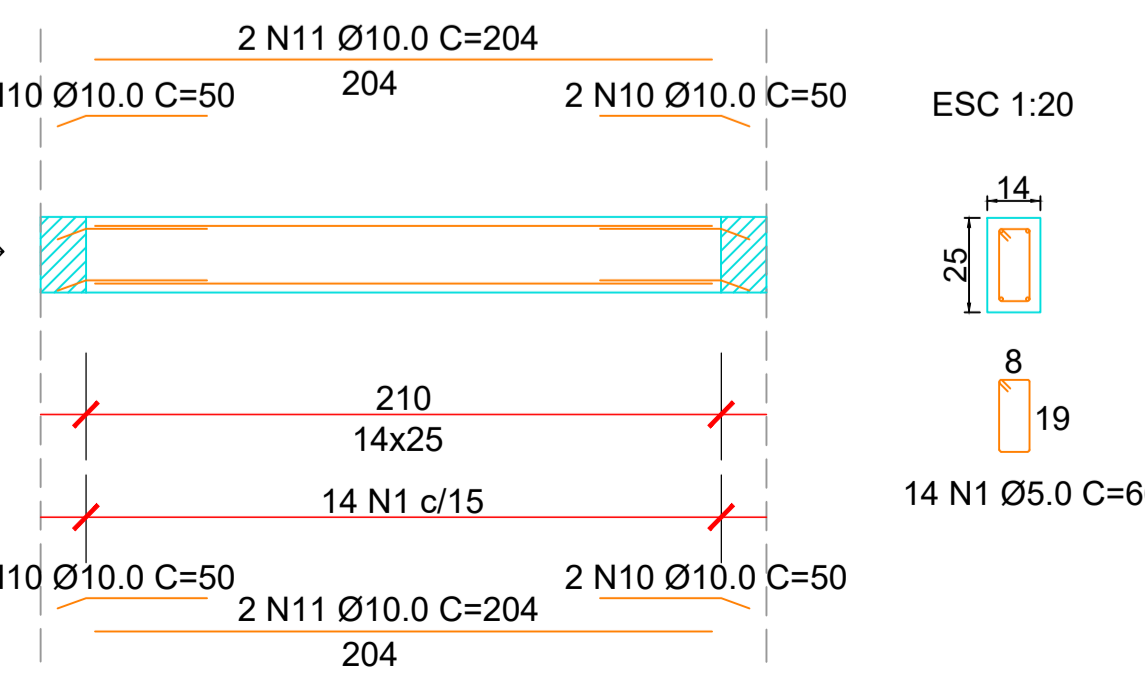


VB 10
ESC 1:25



FURAR VIGA BALDRAME EXISTE COM BROCA DE 10MM PARA CHUMBAR A EMENDA DE ANCORAGEM DA NOVA VIGA BALDRAME

VB 07
ESC 1:25



PREFEITURA DO MUNICÍPIO
SANTA CECÍLIA
ENGENHARIA E PROJETOS
R. JOÃO GOETTEN SOBRINHO - CENTRO SANTA CECÍLIA, SC
FONE: (49) 3244-2032

Título: CAPS - Centro de Atenção Psicossocial		Projeto: Estrutural	Data: 11/05/2022
Local da obra: Rua Cabo João Maria Teixeira Palhano		Engº Resp. Projeto: Luciano Rosa dos Santos Engenheiro Civil CREA/SC 156118-9	Engº Resp. Execução: Luciano R Santos, Construir: 459,52 m²
Proprietário/Responsável: NOME: Alessandra Aparecida Garcia CNPJ: 85.997.237/0001-41		Terreno: 1665,00 m² Folha: 02/02	